



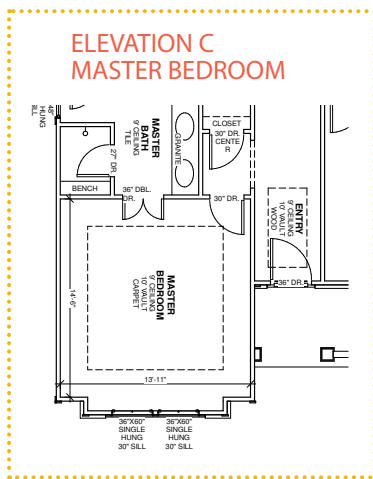
ELEVATION A



ELEVATION B



ELEVATION C - PREMIUM

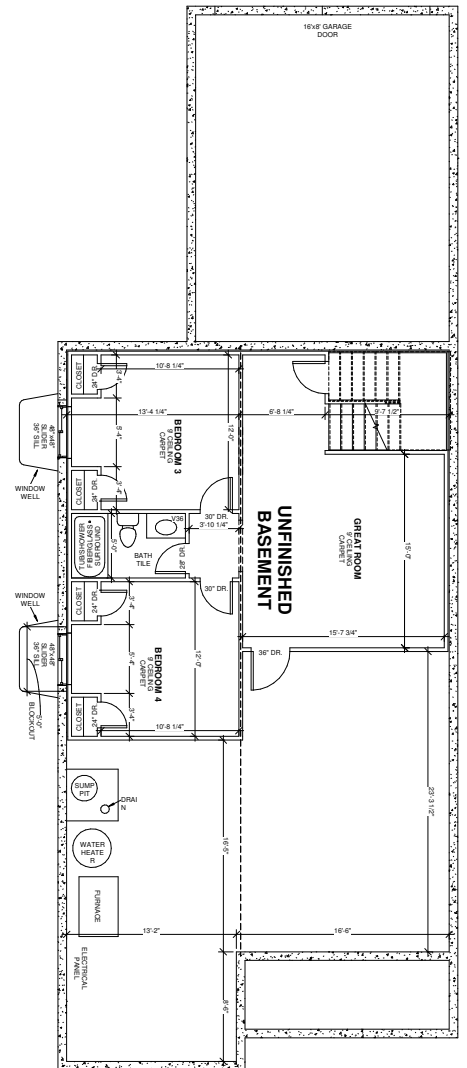
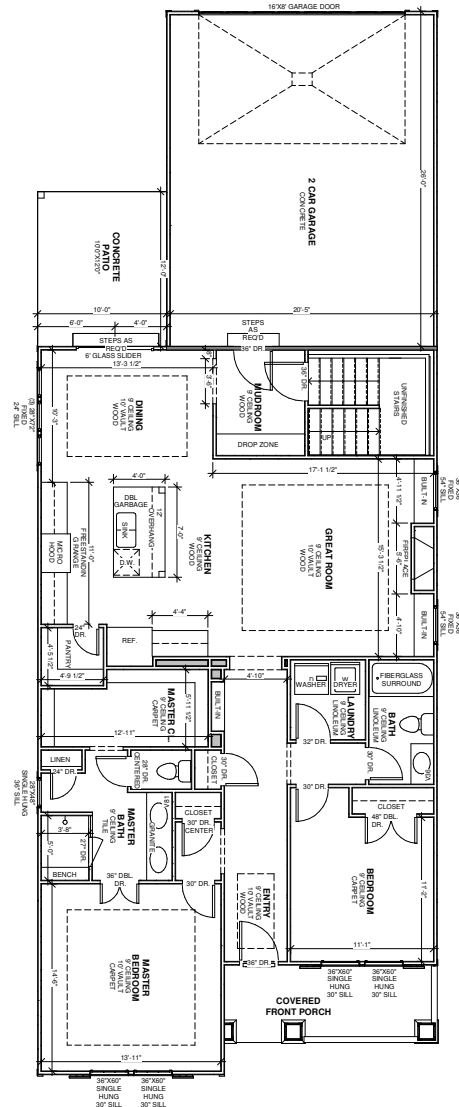


CARDINAL CREST HOMES RESERVES THE RIGHT TO MODIFY OR CHANGE THE FLOOR PLANS, HOME SPECIFICATION, DESIGNS, FEATURES, OPTIONS, PRICES, OR TERMS WITHOUT NOTICE OR OBLIGATION. HOME SQUARE FOOTAGES ARE APPROXIMATES AND ARE SUBJECT TO CHANGE. REV. 04/17

HERITAGE PARK

VILLAS AT SHOAL CREEK

- 1,622 FIRST FLOOR FINISHED SQFT
- 1,497 UNFINISHED BASEMENT SQFT
- 788 BASEMENT FINISHED SQFT OPTION (2,410 TOTAL SQFT)
- 2-4 BEDROOMS
- 2-3 BATHS
- 2 CAR OVERSIZED GARAGE
- 16'6"X6'0" COVERED FRONT ENTRY



FIRST FLOOR

BASEMENT

www.HeritageParkKC.com

CRESTWOOD BASE PRICE \$302,500.00

UPGRADE BUDGET BREAKDOWN

STRUCTURAL SELECTIONS

INITIALS _____	ELEVATION C OPTION	\$3,870.00
INITIALS _____	ZERO ENTRY FRONT PORCH	\$2,260.00
INITIALS _____	REAR COVERED CONCRETE PATIO (10'0"X12'0")	\$2,950.00
INITIALS _____	BASEMENT FINISH (2 BEDROOMS,1 BATH, GREAT ROOM) 780 SQFT	\$23,500.00
INITIALS _____	3RD CAR GARAGE ADDS 10'0"X24'0" (ELIMINATES REAR PATIO)	\$11,885.00

CABINETS

INITIALS _____	GREAT ROOM CABINET BUILT-INS	\$1,085.00
INITIALS _____	STAINABLE CABINETS IN KITCHEN	\$810.00
INITIALS _____	UPGRADE HINGES TO SOFT CLOSE (KITCHEN ONLY)	\$275.00
INITIALS _____	UPGRADE DRAWER SLIDES TO BLUM MOTION SOFT CLOSE (KITCHEN ONLY)	\$455.00

TILE

INITIALS _____	LAUNDRY FLOOR TO TILE	\$265.00
INITIALS _____	GUEST BATH SHOWER WALLS FIBERGLASS SURROUND TO TILE	\$845.00
INITIALS _____	MASTER SHOWER FLOOR TO TILE BASE	\$1,225.00

TOTAL UPGRADES _____

TOTAL SALES PRICE _____

ALLOWANCES (INCLUDED IN BASE PRICE)

CABINETS (ENTIRE HOUSE)	\$5,427.00
APPLIANCES	\$1,888.00
TILE - LEVEL 1 THROUGHOUT HOUSE	-
LIGHT FIXTURES	\$1,200.00
KITCHEN COUNTERTOPS - CATEGORY 1 GRANITE	-
VANITY COUNTERTOPS - CATEGORY 1 GRANITE	-
CARPET - LEVEL 1 THROUGHOUT HOUSE	-
STAIR CARPET - HIGH TRAFFIC	-
IRRIGATION - INCLUDED	-
LANDSCAPING - INCLUDED	-
SOD - INCLUDED	-
EARTHWORK - INCLUDED	-

*IF BASEMENT FINISH IS APPROVED THAN ALLOWANCES WILL ADJUST TO ACCOUNT FOR BASEMENT FINISH

www.HeritageParkKC.com

816-918-4009 | TOMJOHNSON@KW.COM | 816-721-0462 | SRENSCHLER@KW.COM

LOT SELECTION _____



www.HeritageParkKC.com